



2015-2016 SAWS AND DSP OPEN CUT WATER CONSTRUCTION CONTRACT

Solicitation Number: CO-00044

Job No.: 16-4305

ADDENDUM 1

March 22, 2016

To Respondent of Record:

This addendum, applicable to work referenced above, is an amendment to the proposal and plans and specifications and as such will be a part of and included in the Contract Documents. Acknowledge receipt of this addendum by entering the Addendum number and issue date on the space provided in submitted copies of the proposal.

MODIFICATIONS

1. Replace the Point of Contact listed under Special Conditions, Section SC-4.0, SC-4.1 A – Railroad Permits with following information:
Daniel C. Peters
Assistant Manager - Real Estate
Union Pacific Railroad
1400 Douglas St. STOP 1690
Omaha, NE 68179 - 1690
Phone: (402) 544-8620
2. Replace **Bid Proposal** in its entirety with the attached bid proposal. **The attached revised Bid Proposal shall be used for bidding this contract. (BP-1 and Quotes pages 1-4)**

RESPONSES TO QUESTIONS

1. **I saw this project on the website but I noticed there aren't any plans. Will plans be uploaded when they are ready? Is this a continuous project or is this a project that is done as needed at several different times and places throughout the year?**

This is a work order contract and all projects are unspecified at this time. Since location and scope are undefined, there aren't any plans provided. Please review the Special Conditions within the Specifications for additional information.

2. **The Special Conditions states this is a 730 calendar contract or until the funds are exhausted. What is the dollar amount of funds SAWS will allocate for this contract? This information is also needed for bonding purposes**

The contract amount to be awarded will be based on the responsible low bidder's bid.

3. **SAWS has typically been separating the pipe bid items 25,26,27,28 & 29 into certain depth ranges such as 0-6 ft., 6-10 ft. etc. Will SAWS amend the bids to reflect different depths?**

Water pipeline bid items will be paid by depth ranges as shown on the attached revised Bid Proposal. Prospective Bidders shall use this version if they intend to bid on this project.

2. **Bid item 106 Directional Boring 760 LF is a very long bore. This type of bore needs plenty of room at the access points to fuse the pipe all together and be ready to launch it. Can SAWS give the bidders more information as far as the proposed location and a profile sheet? This will give SAWS a much more balanced bid.**

1 of 3

Please refer to the attached proposed project schematic. Prospective bidders please note the horizontal and vertical scales used are not typical.

5. **Bid items 97 thru 104 are all specific repairs to existing line. SAWS has contracts already in place that are specifically for leaks and repairs. Are these bid items to be used only on a work order that the contractor is working on? In other words will SAWS dispatch one of the two crews for this project to install nothing more than a repair?**

The Bid Items listed on this contract's attached revised Bid Proposal are intended to be used only for the work order the Contractor is working on, as released for construction by SAWS. Currently, the scope of the work orders/projects is undefined. Please refer to the Special Conditions within the Specifications. SAWS reserves the right to determine the project scope and location and coordinate with the Contractor prior to issuance of the individual project's/work order's notice to proceed.

6. **Bid item 86 Gate, Fencing etc. 1500 LF is very vague. Currently the Gates are being bid per linear foot instead of on a per each basis. This will increase the cost of the fence. Also, SAWS will receive a much more balanced bid if they break the fence into different types (barb wire, chain link, wrought iron etc.). Currently the contractor will have to bid the most expensive fence to cover his costs.**

Bid item 845 has been revised to pay gates per each. The bid item for fencing will be paid by linear feet for any material, any size. Refer to the attached revised Bid Proposal that shall be used by prospective Bidders, who intend to bid the contract.

7. **Bid item 107 remove 1520 LF of AC Pipe. If the AC main is removed and it is in a street and the new PVC main does not go back into the same ditch will the appropriate Asphalts B&D bid items be paid for these street repairs?**

New PVC main includes trench repair. If trench repair is needed other than for a new water main trench, it should be paid for accordingly. Pay limits for pavement replacement will be per latest SAWS detail DD-812-01 for potable and recycled water main installed.

8. **On the description of potential work sites SAWS wrote Linden Avenue from Zarzamora to _____? Please give us the exterior boundary street and if there are any other planned job locations available from SAWS.**

One of the potential work sites is on Linden Avenue from Zarzamora Street to Ella Street.

9. **Are there any geotechnical reports available? If yes, may we obtain a copy?**

No geotechnical reports are available.

10. **I have bid the directional bore crossing Medina River on Pleasanton Rd previously for SAWS. Why did it not get awarded and constructed to the low contractor? Did anything change on this bore from the previous bid??**

Please see response to Question #4.

11. **A contractor cannot accurately bid the 760 LF 12" HDPI bore without more information from SAWS showing the change of elevation, steepness of the grade changes, the deflection and radius for the bore, working room, fusing room etc. Without this information we cannot establish the proper equipment needed and establish a comprehensive and realistic bid for this work.**

Please see response to Question #4.

12. **When is the anticipated award date for this package?**

The tentative award date for this Contract is May 3, 2016.

13. When is the anticipated date of the final work order?

This can't be determined. Contract Duration is for 730 calendar days or until funds are exhausted, whichever comes first. Please refer to the Special Conditions within the Specifications.

14. This is not a question, just an opinion: I believe SAWS will receive better pricing if the 12" directional bore is bid in a separate independent package. This bore typically will be out sourced and is a specialty type of construction completely unrelated to the rest of the bid package. Totally different equipment, manpower and training required for the bore versus open cutting the 11,000 LF of water mains.

Please see response to Question #4.



3-22-16

Maria S. Gomez, P.E.
GGI Engineers

ACKNOWLEDGEMENT BY RESPONDENT

Each Respondent shall acknowledge receipt of this Addendum No. 1 by noting such and signing the Price Proposal.

This undersigned acknowledges receipt of this Addendum No. 1 and the proposal submitted herewith is in accordance with the information and stipulations set forth.

Date

Signature of Respondent

END OF ADDENDUM

BID PROPOSAL

PROPOSAL OF _____, a corporation
a partnership consisting of _____
an individual doing business as _____

THE SAN ANTONIO WATER SYSTEM:

Pursuant to Instructions and Invitation to Bidders, the undersigned proposes to furnish all labor and materials as specified and perform the work required for the project as specified, in accordance with the Plans and Specifications for the following prices to wit:

(PLEASE SEE ATTACHED PDF LIST OF BID ITEMS)

BIDDER'S SIGNATURE & TITLE

FIRM'S NAME (TYPE OR PRINT)

FIRM'S ADDRESS

FIRM'S PHONE NO. /FAX NO.

FIRM'S EMAIL ADDRESS

The Contractor herein acknowledges receipt of the following:
Addendum Nos. _____

OWNER RESERVES THE RIGHT TO ACCEPT THE OVERALL MOST RESPONSIBLE BID.

The bidder offers to construct the Project in accordance with the Contract Documents for the contract price, and to complete the Project within **730** calendar days after the start date, or until funds are exhausted, whichever comes first, as set forth in the Authorization to Proceed. **The bidder understands and accepts the provisions of the contract Documents relating to liquidated damages of the project if not completed on time.**

Complete the additional requirements of the Bid Proposal which are included on the following pages.

**2015-2016 SAWS and DSP Open Cut Water Construction Contract
SAWS Job No. 16-4305
Solicitation No. CO-00044**

Quotes							
Line No.	Item No.	Quote Category	Item Description	Unit	Quantity	Unit Bid Price	Total Price
1	103.1	General Water Bid Items	Remove Concrete Curb	LF	1,100.00		
2	103.3	General Water Bid Items	Remove Sidewalks and Driveways	SF	3,350.00		
3	103.3	General Water Bid Items	Remove Miscellaneous Concrete	SF	500.00		
4	202.1	General Water Bid Items	Prime Coat	GAL	500.00		
5	203.1	General Water Bid Items	Tack Coat	GAL	250.00		
6	205.4	General Water Bid Items	Hot Mix Asphaltic Pavement Type "B" (10" Pavement Thickness)	SY	1,500.00		
6	205.4	General Water Bid Items	Hot Mix Asphaltic Pavement Type "D" (2" Pavement Thickness)	SY	1,000.00		
7	206.1	General Water Bid Items	Asphalt Treated Base (12" Compacted Depth)	SY	4,000.00		
8	208.1	General Water Bid Items	Salvage, Haul, Stockpile Reclaimable Asphalt Pavement (2" Depth)	SY	1,000.00		
9	500.1	General Water Bid Items	Concrete Curb and Gutter	LF	1,100.00		
10	502.1	General Water Bid Items	Concrete Sidewalks - Conventionally Formed	SY	2,150.00		
11	503.1	General Water Bid Items	Concrete Driveway	SY	1,131.00		
12	503.1	General Water Bid Items	Concrete Driveway- Commercial	SY	50.00		
13	506.1	General Water Bid Items	Concrete Retaining Wall - Combination Type	CY	15.00		
14	513.1	General Water Bid Items	Removing and Relocating Mailboxes	EA	2.00		
15	513.3	General Water Bid Items	Removing and Relocating Mailboxes (Masonry)	EA	2.00		
16	515.1	General Water Bid Items	Top Soil (3")	CY	135.00		
17	516.1	General Water Bid Items	Bermuda Sodding	SY	100.00		
18	516.2	General Water Bid Items	St. Augustine Sodding	SY	100.00		
19	518	General Water Bid Items	New Tree & Shrub Planting and Maintenance - all size trunks	EA	5.00		
20	520.1	General Water Bid Items	Hydromulching (Residential or Commercial)	SY	1,100.00		
21	550	General Water Bid Items	Trench Excavation Safety Protection	LF	11,000.00		
22	552.1	General Water Bid Items	Remove and Relocate Irrigation Systems	LF	100.00		
23	813	General Water Bid Items	Water Service for fire lines, all materials, all materials, all sizes	EA	2.00		
24	818	General Water Bid Items	6" PVC Waterline (Restrained as Required) (0'-6' cut)	LF	10.00		
	818	General Water Bid Items	6" PVC Waterline (Restrained as Required)(6'-14' cut)	LF	10.00		
25	818	General Water Bid Items	8" PVC Waterline (Restrained as Required)(0'-6' cut)	LF	490.00		
	818	General Water Bid Items	8" PVC Waterline (Restrained as Required)(6'-14' cut)	LF	490.00		
26	818	General Water Bid Items	12" PVC Waterline (Restrained as Required)(0'-6' cut)	LF	2,150.00		
26	818	General Water Bid Items	12" PVC Waterline (Restrained as Required)(6'-14' cut)	LF	2,150.00		
27	818	General Water Bid Items	16" PVC Waterline (Restrained as Required)(0'-6' cut)	LF	1,050.00		
27	818	General Water Bid Items	16" PVC Waterline (Restrained as Required)(6'-14' cut)	LF	1,050.00		
28	818	General Water Bid Items	24-inch PVC Waterline (Restrained as Required)(0'-8' cut)	LF	2,150.00		
28	818	General Water Bid Items	24-inch PVC Waterline (Restrained as Required)(8'-14' cut)	LF	2,150.00		
29	818	General Water Bid Items	12-inch Ductile Iron Pipe (Pressure Class 350) (Restrained as Required)	LF	50.00		

**2015-2016 SAWS and DSP Open Cut Water Construction Contract
SAWS Job No. 16-4305
Solicitation No. CO-00044**

Quotes							
Line No.	Item No.	Quote Category	Item Description	Unit	Quantity	Unit Bid Price	Total Price
30	822	General Water Bid Items	Short Yard Piping	LF	100.00		
31	822	General Water Bid Items	1" Long Yard Piping	LF	42.00		
32	824	General Water Bid Items	New 3/4" Short Service	EA	6.00		
33	824	General Water Bid Items	New 3/4" Long Service	EA	1.00		
34	824	General Water Bid Items	New 1" Short Service	EA	1.00		
35	824	General Water Bid Items	New 1" Long Service	EA	1.00		
36	824	General Water Bid Items	New 1 1/2" Short Service	EA	1.00		
37	824	General Water Bid Items	New 1 1/2" Long Service	EA	1.00		
38	824	General Water Bid Items	Relay 3/4" Short Service	EA	30.00		
39	824	General Water Bid Items	Relay 3/4" Long Service	EA	31.00		
40	824	General Water Bid Items	Relay 1" Short Service	EA	1.00		
41	824	General Water Bid Items	Relay 1" Long Service	EA	1.00		
42	824	General Water Bid Items	Relay 1 1/2" Short Service	EA	1.00		
43	824	General Water Bid Items	Relay 1 1/2" Long Service	EA	1.00		
44	824	General Water Bid Items	Relocate 3/4" Short Service	EA	5.00		
45	824	General Water Bid Items	Relocate 3/4" Long Service	EA	1.00		
46	824	General Water Bid Items	Relocate 1" Short Service	EA	1.00		
47	824	General Water Bid Items	Relocate 1" Long Service	EA	1.00		
48	824	General Water Bid Items	Relocate 1 1/2" Short Service	EA	1.00		
49	824	General Water Bid Items	Relocate 1 1/2" Long Service	EA	1.00		
55	824	General Water Bid Items	New Unmetered 3/4" Short Service	EA	4.00		
56	824	General Water Bid Items	New Unmetered 3/4" Long Service	EA	2.00		
57	824	General Water Bid Items	Customer Shut-off Valve	EA	61.00		
58	826	General Water Bid Items	Valve Box Adjustment	EA	2.00		
59	828	General Water Bid Items	6" Gate Valve	EA	5.00		
60	828	General Water Bid Items	8" Gate Valve	EA	6.00		
61	828	General Water Bid Items	12" Gate Valve	EA	8.00		
62	828	General Water Bid Items	16" Gate Valve	EA	4.00		
63	830	General Water Bid Items	24" Butterfly Valve	EA	5.00		
	831	General Water Bid Items	8"x8" Tee Cut In	EA	1.00		
	831	General Water Bid Items	12"x12" Tee Cut In	EA	1.00		
	831	General Water Bid Items	16"x16" Tee Cut In	EA	1.00		
	832	General Water Bid Items	8"x6" Tapping Sleeves & Valves	EA	1.00		
	832	General Water Bid Items	12"x8" Tapping Sleeves & Valves	EA	1.00		
	832	General Water Bid Items	16"x8" Tapping Sleeves & Valves	EA	1.00		

**2015-2016 SAWS and DSP Open Cut Water Construction Contract
SAWS Job No. 16-4305
Solicitation No. CO-00044**

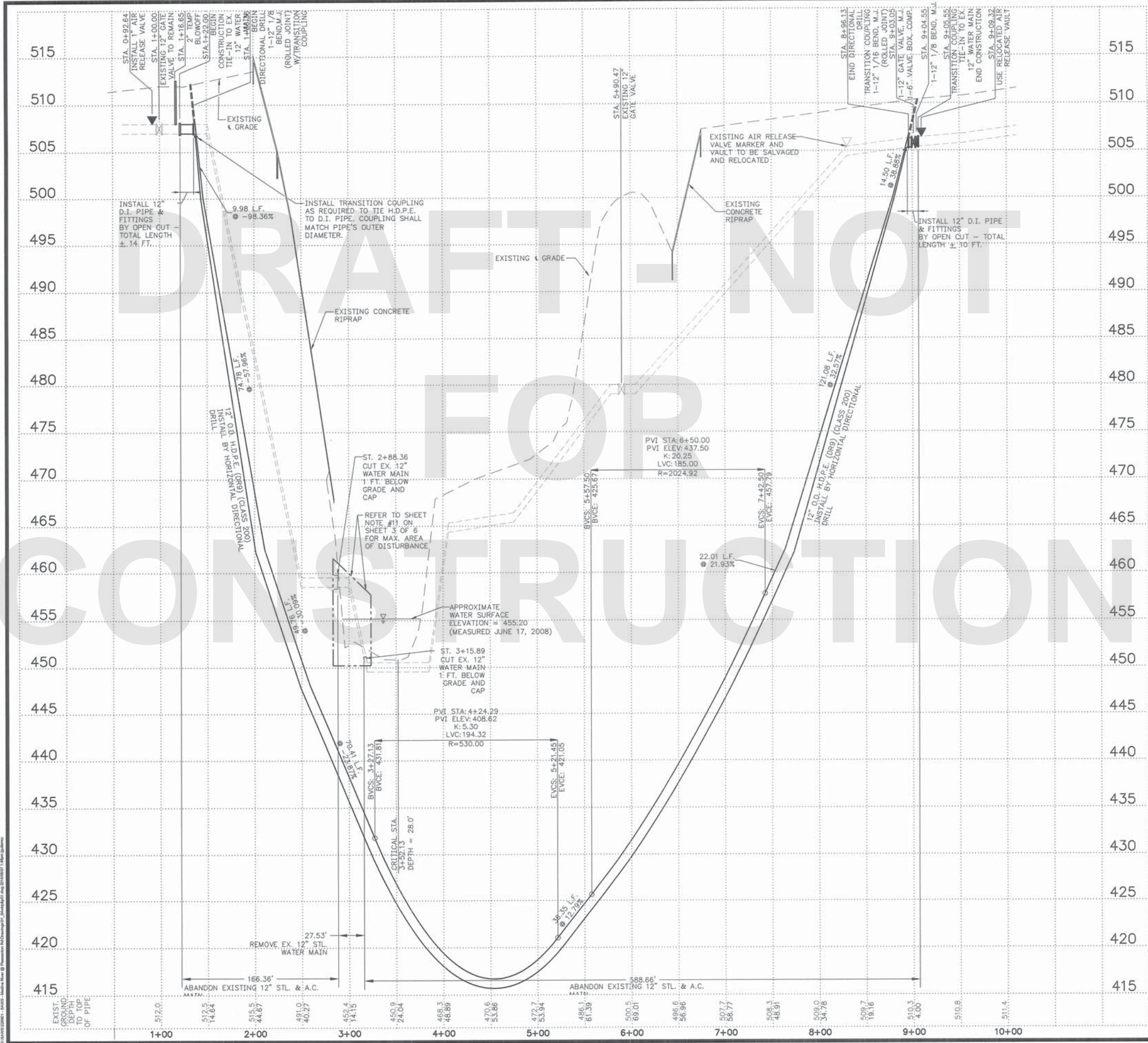
Quotes							
Line No.	Item No.	Quote Category	Item Description	Unit	Quantity	Unit Bid Price	Total Price
	832	General Water Bid Items	16"x12" Tapping Sleeves & Valves	EA	1.00		
	832	General Water Bid Items	24"x8" Tapping Sleeves & Valves	EA	1.00		
	832	General Water Bid Items	24"x12" Tapping Sleeves & Valve	EA	1.00		
	832	General Water Bid Items	24"x16" Tapping Sleeves & Valves	EA	1.00		
64	833	General Water Bid Items	Existing Meter and (New Meter) Box Relocation	EA	69.00		
65	833	General Water Bid Items	Meter Box	EA	67.00		
66	834	General Water Bid Items	Fire Hydrant	EA	15.00		
67	836	General Water Bid Items	Pipe Fittings (All Sizes & Types)	TON	19.30		
68	840	General Water Bid Items	2" Water Tie-In	EA	1.00		
69	840	General Water Bid Items	4" Water Tie-In	EA	1.00		
70	840	General Water Bid Items	6" Water Tie-In	EA	5.00		
71	840	General Water Bid Items	8" Water Tie-In	EA	1.00		
72	840	General Water Bid Items	10" Water Tie-In	EA	3.00		
73	840	General Water Bid Items	12" Water Tie-In	EA	4.00		
74	840	General Water Bid Items	16" Water Tie-Ins	EA	2.00		
75	840	General Water Bid Items	24" Water Tie-In	EA	4.00		
76	841	General Water Bid Items	Hydrostatic Testing	EA	10.00		
77	844	General Water Bid Items	2" Blow-off, Permanent	EA	1.00		
78	844	General Water Bid Items	2" Blow-off, Temporary	EA	19.00		
79	844	General Water Bid Items	4" Blow-off, Temporary	EA	4.00		
80	845	General Water Bid Items	Fencing, and Property Marker Details (any size, any type)	LF	1,500.00		
80	845.1	General Water Bid Items	Gates (any size)	EA	4.00		
81	846	General Water Bid Items	1" Air Release Valve Assemblies	EA	7.00		
82	846	General Water Bid Items	2" Air Release Assemblies	EA	2.00		
83	856.1	General Water Bid Items	Jacking, Boring, or Tunneling 24"	LF	500.00		
84	856.1	General Water Bid Items	Jacking, Boring, or Tunneling 42"	LF	100.00		
85	856.2	General Water Bid Items	8" Carrier Pipe for Jacking, Boring, or Tunneling	LF	100.00		
86	856.2	General Water Bid Items	12" Carrier Pipe for Jacking, Boring, or Tunneling	LF	500.00		
87	856.2	General Water Bid Items	24" Carrier Pipe for Jacking, Boring, or Tunneling	LF	100.00		
88	856.3	General Water Bid Items	Steel Casing 24"	LF	500.00		
89	856.3	General Water Bid Items	Steel Casing 42"	LF	100.00		
90	858	General Water Bid Items	Concrete Encasement	CY	100.00		
91	1015	General Water Bid Items	3/4" & 1" Service Line Leak/Break Repair, all types	EA	3.00		
92	1015	General Water Bid Items	1 1/2" & 2" Service Line Leak/Break Repair, all types	EA	1.00		
93	1020	General Water Bid Items	4-inch Main Break/Leak Repair, all types	EA	4.00		

**2015-2016 SAWS and DSP Open Cut Water Construction Contract
SAWS Job No. 16-4305
Solicitation No. CO-00044**

Quotes							
Line No.	Item No.	Quote Category	Item Description	Unit	Quantity	Unit Bid Price	Total Price
94	1020	General Water Bid Items	6-inch Main Break/Leak Repair, all types	EA	2.00		
95	1020	General Water Bid Items	8-inch Main Break/Leak Repair, all types	EA	1.00		
96	1020	General Water Bid Items	12-inch Main Break/Leak Repair, all types	EA	1.00		
97	1020	General Water Bid Items	16-inch Main Break/Leak Repair, all types	EA	2.00		
98	1020	General Water Bid Items	24-inch Main Break/Leak Repair, all types	EA	2.00		
99	1040	General Water Bid Items	Temporary Waterline (2"-6" pipe diameter_ to include temporary water services (Restrained as required)	LF	100.00		
99	2026	General Water Bid Items	Directional Drill 12" OD HDPE Pipe (DR 9) (200 psi) (IPS)	LF	760.00		
100	3000	General Water Bid Items	Removal, Transportation, and Disposal of A.C. Pipe (All Pipe Sizes)	LF	1,520.00		
101	4438	General Water Bid Items	Flowable Backfill (TxDOT Spec.)	CY	100.00		
102	9101.1	General Water Bid Items	Grout and Abandon Existing 12" Water Main	LF	755.00		
103	9101.1	General Water Bid Items	Grout and Abandon Existing 24" Water Main	LF	4,300.00		
104	9101.2	General Water Bid Items	Existing 12" Steel Water Main Removal	LF	28.00		

TOTAL BID AMOUNT

\$ _____



NOTES FOR HORIZONTAL DIRECTIONAL DRILLING:

1. ALL 12" H.D.P.E. USED FOR THE HORIZONTAL DIRECTIONAL DRILLING OPERATION SHALL BE FULLY RESTRAINED AND SHALL BE D.R.9; CLASS 200 WITH A 12" OUTER DIAMETER.
2. THE CONTRACTOR SHALL BE RESPONSIBLE FOR THE DISPOSAL OF DRILLING MUD IN ACCORDANCE WITH THE GENERAL CONDITIONS OF THE SPECIFICATIONS.
3. HORIZONTAL DIRECTIONAL DRILLING OPERATIONS, TESTING AND QUALITY CONTROL PROCEDURES SHALL BE IN ACCORDANCE WITH THE SPECIFICATIONS AND PIPE MANUFACTURER'S RECOMENDATIONS.
4. CONTRACTOR SHALL BE COMPENSATED FOR INSTALLING THE ACTUAL LENGTH OF DIRECTIONAL DRILLED PIPE AS SHOWN IN PROFILE VIEW, NOT FROM STATION TO STATION.
5. CONTRACTOR SHALL PROVIDE A LEVELING PAD AS NECESSARY TO LEVEL-UP THE DRILLING RIG MATERIALS SHALL COMPLY WITH SPECIFICATION SECTION 2026 HORIZONTAL DIRECTIONAL DRILLING.

HORIZONTAL SCALE: 1"=50'
 VERTICAL SCALE: 1"=5'

NOT FOR CONSTRUCTION

WATER MAIN - PROFILE				
UTILITY LEGEND PROP. WATER MAIN: 6" CL. W. (Symbol) EXIST. WATER MAIN: 6" CL. W. (Symbol) GAS MAIN: 2" (Symbol) SANITARY SEWER: 8" SA (Symbol) STORM SEWER: 24" ST (Symbol) UTILITY POLE LINE: (Symbol) ELECTRIC CABLE: (Symbol) TELEPHONE CABLE: (Symbol) DUAL BRANCH SERV.: (Symbol) NEW UNMETERED SERVICE: (Symbol) 3/4" SINGLE: (Symbol) 1" OR LARGER: (Symbol) SERVICE RECONNECT: (Symbol) 3/4": (Symbol) 1" OR LARGER: (Symbol) SERVICE RELAY: (Symbol) 3/4": (Symbol) 1" OR LARGER: (Symbol) SERVICE RELOCATE: (Symbol) 3/4": (Symbol) 1" OR LARGER: (Symbol) RELOCATE METER: (Symbol) NEW SERVICE: (Symbol) 3/4": (Symbol) 1" OR LARGER: (Symbol)				
No.	Revision	Drawn	Approved	Date
REVISIONS 				
PLEASANTON RD. AT MEDINA RIVER - 12" WATER MAIN REPLACEMENT				
DEVELOPER: SAN ANTONIO WATER SYSTEM CONT. BUDGET PROJ. 34, 37				
SUBMITTED: _____ APPROVED: _____				
MAP No. 162-520 SECT. No. _____				SHEET _____
DR. J.G. CK. D.H.		JOB No. _____		